



BK Elevators And Technologies



www.bkelevators.in

Introduction

- BK Elevators And Technologies is a new establishment in the elevator industry with ambitious goals to become a leading provider of elevators and related services in the market. The company is established with a vision to provide high-quality, reliable and innovative solutions for the vertical transportation needs of residential and commercial buildings.
- We are committed to delivering exceptional customer service and has a team of experienced professionals, who are dedicated to providing personalized support and guidance to clients throughout the process of selecting, installing and maintaining elevators. BK Elevators And Technologies offers a wide range of elevator solutions, including residential elevators, commercial elevators and wheelchair elevators.
- One of the key goals of BK Elevators And Technologies is to provide innovative and eco-friendly solutions that meet the highest standards of safety, efficiency and sustainability. BK Elevators And Technologies is constantly exploring new technologies and trends in the industry to offer the most advanced and reliable elevator solutions that benefit both clients and the environment.
- In addition to this we focus on quality and innovation, BK Elevators And Technologies is also committed to providing cost-effective solutions that meet the needs and budgets of its clients. The company offers flexible financing options and works closely with clients to develop customized solutions that meet their specific needs and preferences.

Company Governance

- ISO 9001:2015 Certified company
- Governed By professional and qualified promoters having more than 17 years experience in industry. We are Supplemented with knowledge and Experience in various field of Elevators segments like Sales & Service ,Procurement, Import & Export or installation.
- We are having opulent connection of client tale from Corporate to Government, Builders and architects.
- We have World Class technology associates, Cost- effective processes. Strict quality parameters. A robust dealers network. We put it all to work.
- We are focused and determined to new age of modernization and technology. our main focus to establish our network in overseas which will based on quality and innovation with customized solutions to meet specific needs and preference of our valued clients.



Vision

- To provide highest quality products and services with value pricing, geared towards establishing a long term satisfying relationship with our customers.
- To constantly strive for excellence in all business activities leading to lowest TCO to customers by periodic review and improvements to stay head of competition.
- We engage in constant product improvements by R&D, understanding market dynamics employing the best business practices and retaining the best talents in the industry
- BK Elevators And Technologies Vision for 2030 is to become the leading provider of elevator solutions in the market with a reputation for delivering exceptional quality, innovation, and customer service. The company aims to achieve this vision by focusing on several key strategies.



Quality Policy

- Achieve fool-proof process by continuously analyzing the gap and inculcating attitude towards quality by involvement, participation and training at all levels, with periodic review of performance
- Improving our performance continually by adapting to the best technology practices and motivating personal at all levels through involvement, participation and training
- Effectively communicate the policy at all levels, set objectives and review for continuing suitability to Quality Management system



Product Portfolio

- Passenger Elevators
- Capsule Elevators
- Home Elevators
- Hospital Elevators
- Hydraulic Elevators
- Freight Elevators
- Dumbwaiter Elevator
- Chair Elevators
- Escalators
- Car Parking Solution



Product Highlights

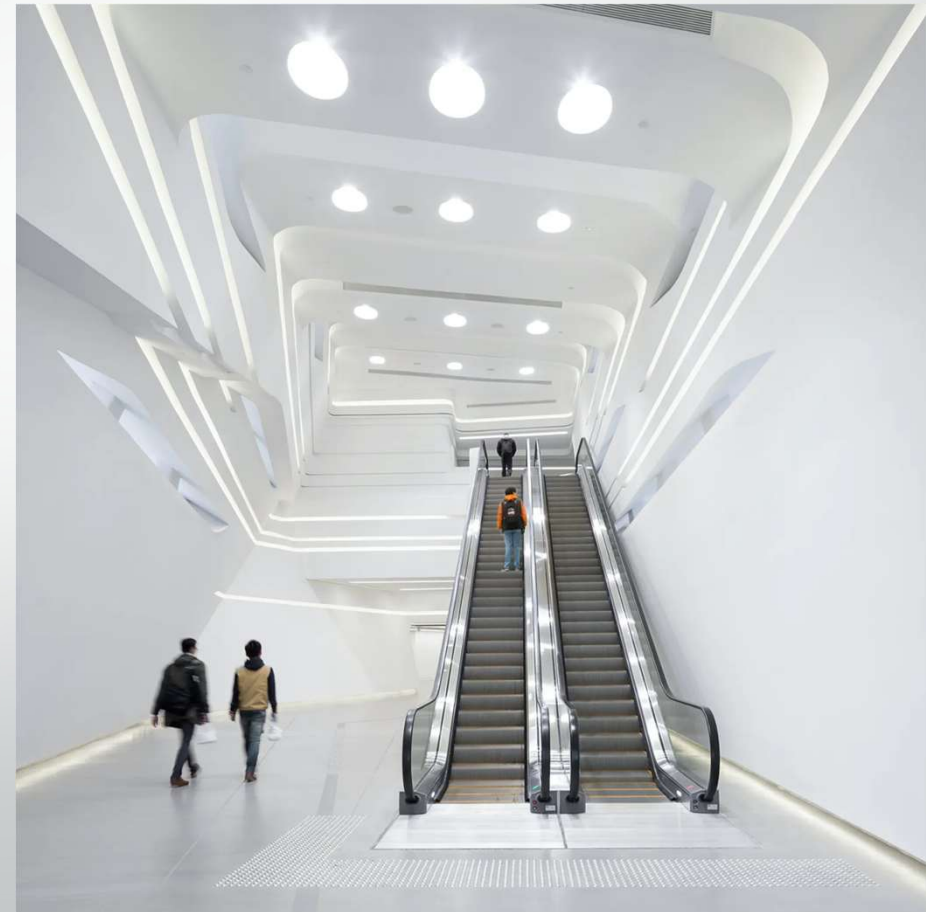
- Passenger Elevators: BK Elevators And Technologies passenger elevator offers an effortless ride to passengers weighing 272 Kg to 1768 Kgs. Single passenger or Passenger's group can easily accommodate in BK Elevators And Technologies with various sizes and functions depending on building type. our elevators are well equipped and having special customize features as per project's demand.
- Capsule Elevators : BK Elevators And Technologies ensures that our capsule elevators are safe and compliant with relevant regulations and standards. you can get all types and sizes of capsule lifts with contemporary design and an incomparable experience from large to small capsule size weighing 544Kg to 1360Kg.
- Home Elevators : BK Elevators And Technologies Home Elevator ranges from traditional to contemporary, with an almost endless array of customization options. our home elevators can be built into surprisingly small spaces also Home is Safe-paradise ,considering this as main feature , BK Elevators And Technologies are equipped with safety feature like emergency stop buttons, interlock in doors, door sensor which detects obstruction between the doors and refrain elevator from moving also there are optional feature like backup of power system and noise/ jerk free drives
- Hospital Elevators : BK Elevators And Technologies Hospital elevators are designed to provide safe and seamlessly drive and equipped with medical needs which offers safety and comfort our hospital elevators are ranging from 13pass to 26 Pass with various options in operation and speed from 0.50mps to 2.5mps

- [Hydraulic Elevators](#): BK Elevators And Technologies offers cost effective choice for low rise buildings which are more sustainable powered by piston on steel ropes . Easy to install and maintain. Hydraulic elevators have been rated the safest option for home elevators as it required less pit and overhead.
- [Freight \(Goods\) Elevators](#): Freight elevators usually are larger and known for its capacity to transport goods more than comfort and speed. capacity of these lifts starts from 500Kg to 10,000Kgs BK Elevators And Technologies offers economical and reliable solution for handling heavy duty freight. as per client's specific need, Weight Capacity, type of load, Travel distance, Method of loading; Number of floors served and Freight Loading Class.
- [Dumbwaiter Elevator](#) : customize dumbwaiter option is also available for hospitals, restaurants ,schools and private homes .Dumbwaiter lifts are small freight elevators and are installed within modern structures
- [Chair Lift](#) : Battery driven chair lift is a good option who have difficulty navigating stairs capable to carry weight up to 125Kg .100% safe , installed quickly and easily without causing any disruption to your home building.
- [Car Parking System](#): Save land area and take full use of the space to raise the number of parking cars. These systems are hydraulically operated and very useful systems for multistory buildings , Apartments as well hotels All customized solutions can be to fit the specific needs of a building and its occupants. BK Elevators And Technologies can work with building owners and architects to determine the best parking solution for each individual building.

Escalators

BK Elevators And Technologies has a complete range of Imported Elevators which are safe and reliable with a range of safety features such as emergency stop buttons, Handrails, sensors that detect obstruction in addition to its practical function we also have visually striking designs with a variety of colors and finishes at a very cost effective rate

Specifications	
Installation	Indoor/Out Door
Finish	SS/ MS
Operation	Single/Parallel
Inclination	30/ 35 Degree
Speed	0.50 to 0.65mps
Travel Height	3 to 6 Mtr
Step width	600mm,800mm,1000mm



Gearless Machine Series

Montanari Group was founded on 1970 by Giulio Montanari. The group headquarter is in Italy - Modena a land known all over the world as the Motor Valley. The plant of the parent company of Montanari group has a 4,85,000 sqft surface and more than 30,000 machines supplies every year globally. Manufacturing is internal at 95% and ISO 9001 certified. Since 1970, Montanari traction machines and components are the beating heart of thousands of elevators in the world.



MONTANARI-ITALY

Gearless Machine Series

Torin Drive India, a subsidiary of Torin Drive USA, headquartered in Memphis, Tennessee,

Torin is dedicated to pioneering innovative elevator solutions. Its global R&D team ensures cutting-edge, code-compliant products for clients worldwide. With a focus on quality and efficiency.

Based in Mumbai, Maharashtra, facilitates commitment to delivering top-tier elevator traction machines and accessories. From engineering design to on-site support,

Torin is dedicated to elevating industry standards & providing solutions for modernization in the ever changing landscape of vertical transport.



TORIN-CHINA

Gearless Machine Series

KDS is an operating unit of Nidec Motor Corporation, it used to belong to Kinetek group. Which is a leader in the world economy by providing product and technology solutions that exceed the expectations of customers. KDS holds market leading positions in the electric vehicle, elevator/escalator, commercial floor care, material handling, golf and utility vehicle, wind mill, aerial work platform and medical market segments. KDS provides Nidec with a strong Asia base for the design, manufacturing and sales of products for domestic and international markets. Located in Foshan City, Guangdong province, PRC, KDS manufactures products for electric vehicle, escalator, material handling and other industries. KDS is dedicating to be the best in the industry, and provide excellent service and products to global customers.



KDS- USA

Fermator



Fermator Group Is the largest mono-product Manufacturer of automatic doors for lifts in the world. Fermator doors are installed worldwide for light ,medium and heavy traffic duty lifts, for domestic use, offices, airports, hotels and public buildings

With Headquarter in Spain and production plants located in France ,Italy , Poland ,Greece , India, China and Brazil the Fermator group Responds effectively to the demands of all markets requiring automatic doors for lifts resulting in a major worldwide market share

The Automatic doors comply with International standards EN-81-1/2 ,ASME- A17.1-2000 and fire requirements EN81-58 and UL 10B among numerous others

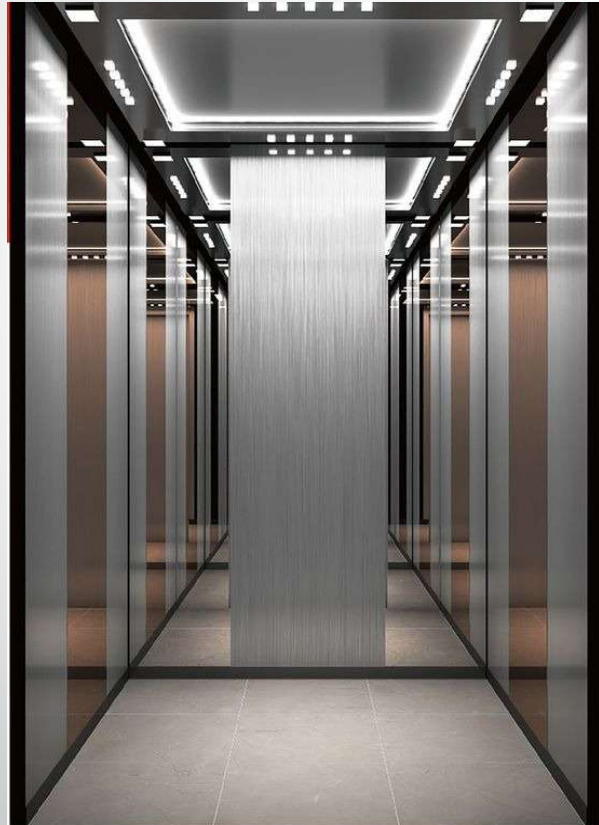
MS Powder Coated Cabins



SS Finish Cabins



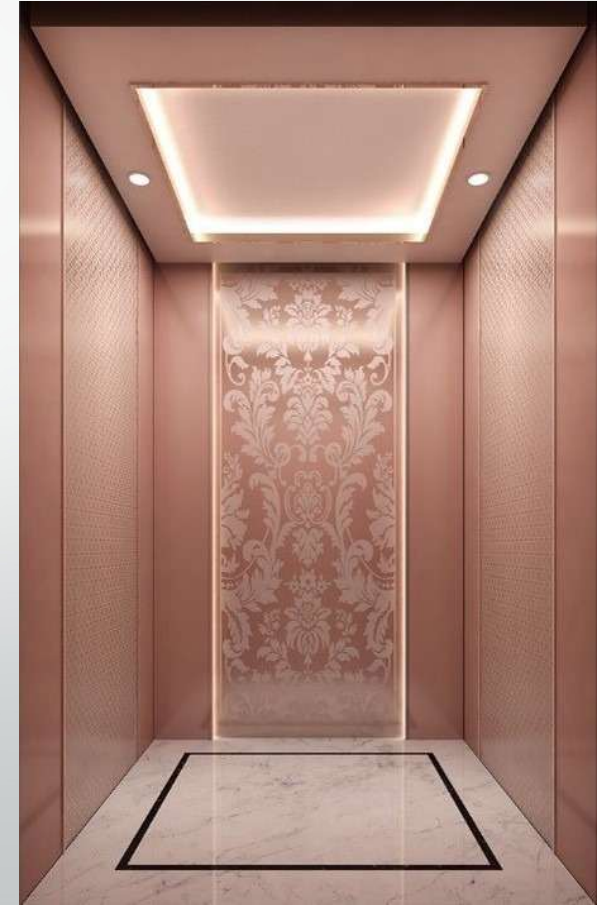
SS Designer Cabin



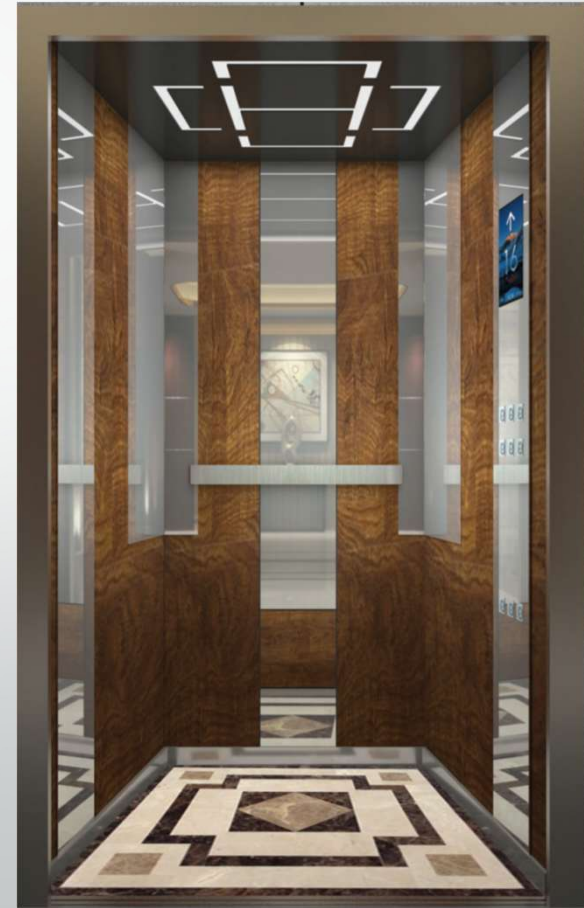
Glass Cabin



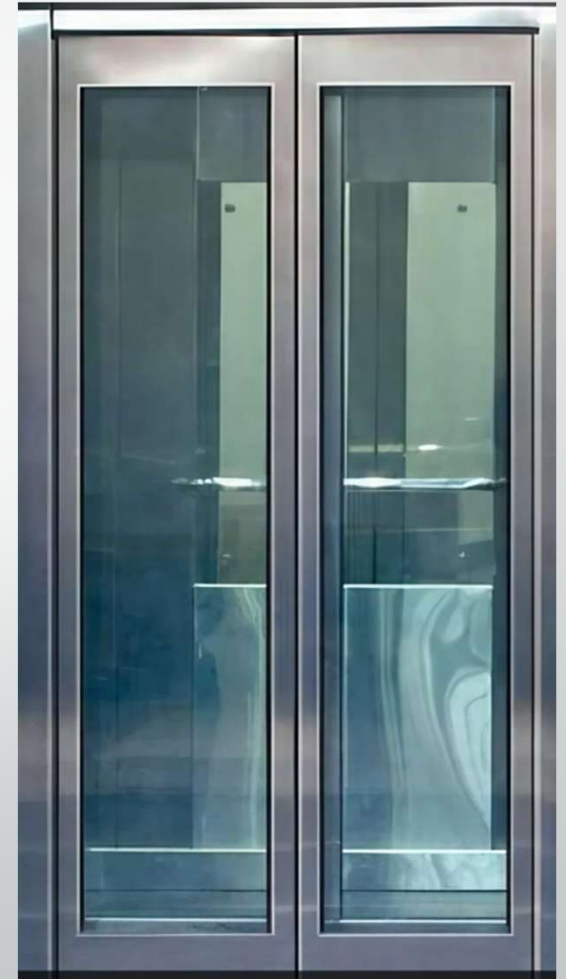
Designer Cabin



Wooden Finish



Doors



Hydraulic System- MORIS ITALY

Established in 1981 Malgesso –Varese (Italy)

It has two production locations in Italy & Spain

Obtains the ISO 9001 Certification to guarantee the quality of product & services

More than 230.000 elevators powered by our components

More than 6.500 My lift platforms delivered throughout the world, since 1997

More than 1.000 elevators model SM2 produced since 2003

Top producer in oleodynamic technology in the elevator sector

Product quality granted by the testing process of every component



PISTON & POWER PACK

Hydraulic System- Blain

A leading company offering a wide spectrum of accessories and solutions for the elevator industry.

Since 1971 Blain hydraulics has specialized in the design and manufacture of the finest and safest control valves for hydraulic elevators. With over half a million Blain valves in operation worldwide.



Controller

ARKEL was established in 1998 and started to its activities with the production of the lift controller cards.

Arkel is the leader brand in service fields such as lift controller cards, controller panels, emergency rescue systems, revision and alarm sets, VVVF driver, integrated lift controller unit production, designing and production of other electronic devices that are needed in the lift industry, research & development and engineering.



ARKEL

Controller

Monarch, founded in 2003, specializes in elevator controllers and gearless drive technology. The company pioneered the concept of Integrated Solutions that combine an elevator controller with the drive in a single package. Monarch's product portfolio includes a range of open and closed loop integrated elevator controllers, as well as a range of open and closed loop elevator and escalator drives. As of 2019, the company has an installed base of >2,000,000 NICE Integrated Solutions.



MONARCH

Car Frame

Our Modern Elevator Car Frame incorporates crucial safety features to ensure passenger protection and operational reliability & equipped with instantaneous safety. We design the car frames using the best metal and tested for breakages, and load resistance.

Product Highlight

- Range up to 2.5mps Progressive safety
- 4mm Sheet Metal / 4*2 Heavy MS channel
- Imported Guide Shoe
- Casting Pulley with FAG/SKF Bearing



“L” Type- Cantilever Car Frame

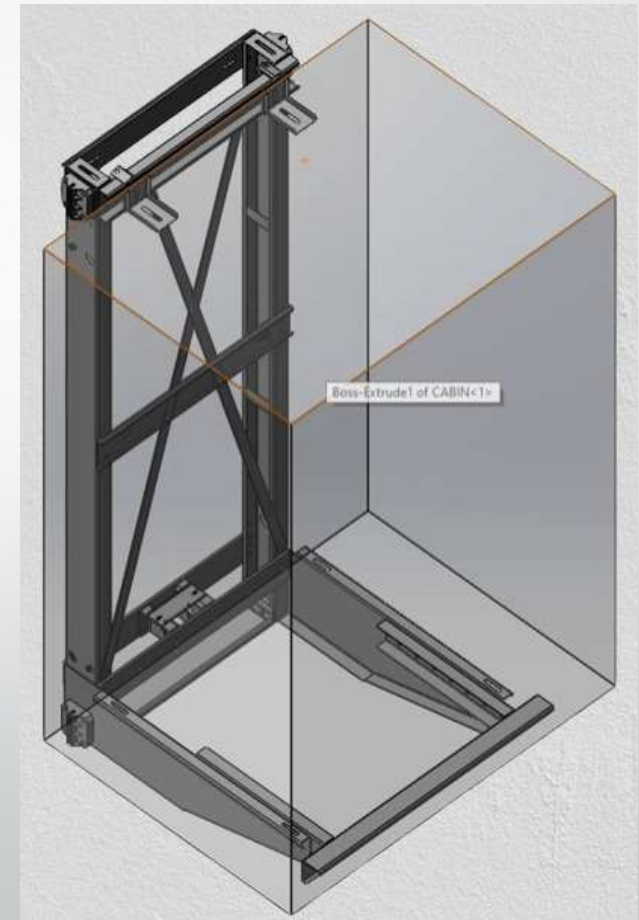
L Type Cantilever car Frames are useful for customized designs in Both MRL as well Hydraulic specially in Bungalows, Suitable for low pit and overhead

The L-shape can optimize the use of space within the elevator shaft, making it easier to fit the car into narrower or irregularly shaped shafts.

The design can simplify the installation and maintenance process, offering easier access to components that might otherwise be difficult to reach.

Product Specifications

- Up to 08 Passenger
- 600DBG to 1000DBG



Machine Base

The heavy machine base of an elevator typically refers to the structural foundation that supports the elevator's machinery and components. Our heavy machine base forms the core structural support for all the mechanical, electrical, and safety components that make up an elevator system. Its design and construction are critical to the elevator's performance, safety, and longevity.

The base of the elevator machine is usually mounted on a solid concrete foundation as well as guide mounted (up to 8 Passengers). This foundation needs to be substantial enough to support the weight of the elevator, the machinery, and the loads it carries.

Product Specifications

- 6 * 3" Heavy Channel
- Guide Mounted machine base up to 08 Passengers
- 18mm machine base plate





PULLEY

Our Casting Pulleys have been engineered to ensure proper alignment and smooth movement of your elevator with FAG or SKF Bearing. The advantages of using cast iron in pulleys are manifold. This material is renowned for its excellent wear resistance and ability to absorb vibrations, which is essential for the smooth operation of elevator systems.

Usha martin Wire Rope are manufactured in advanced state-of-the-art technology and undergo strict quality control measures. Elevator hoisting ropes are designed with close dimensional tolerances to facilitate the jerk-free movement of elevators. Usha Martin quality systems have been accredited by ISO 9001:2008 and ISO 14001:2004.



ROPES



GUIDE RAILS

Elevator guide rails are components of elevator systems that define the path along which the elevators smooth ride. Elevator guide rails are a critical component of elevator systems, providing stability, safety, and guidance for the elevator car as it moves between floors in a building.

- our electromechanical Over speed governors, meticulously designed for safety and reliability. Our Over speed Governor Certified by GCN TÜRK to norms EN 81 20 & complies with IS 14664, EN81, BS2655 & AS1735. The ideal over speed governor for your elevator system needs.



OSG



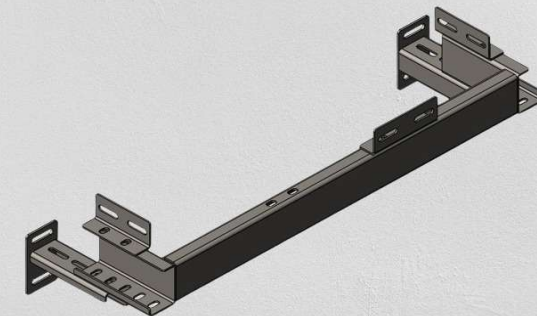
CENTA Elevator, the first company to produce elevator door sensors and electronic overload systems in the Turkish elevator industry, has been operating since 1992 to add value to the elevator industry

- Mechanical capacity (cabin+ load): 3200 kg
- SI Frame (4 Active)
- High precision and easy to adjust
- Adjustable for 4 separate loads
- Water proof sensors IP66

OVERLOAD

Brackets are used to support various components within the elevator system, including the guide rails, counterweights, and mechanical systems. They help distribute loads and maintain structural integrity.

- 50mm Angle - Combination Bracket
- 5mm Thick GP Bracket
- Heavy Channel Base Bracket for higher capacity & Speed



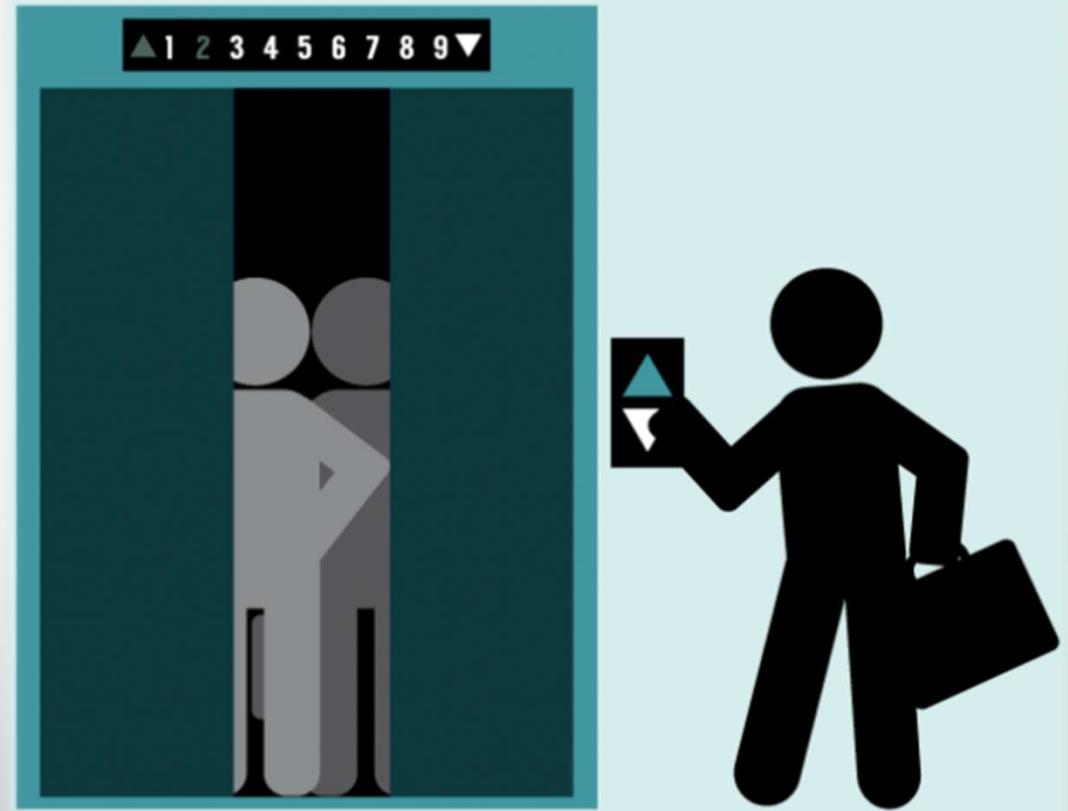
BRACKETS

- Our goal is to provide pro-active service through product availability, technical support, The service offering will reduce your total acquisition cost, minimize risk, collapse cycle time and ultimately delight you, the customer.
- ✓ **Customize Requirement** : We customized to your needs and specialized the same as per your requirement
- ✓ **Engineering & Technical Support** : Total Solution for your technical and commercial needs
- ✓ **Excellent Sales & After Sales Services** : our primary differentiator is that we have excellent sales services and our goal is satisfaction of Clients and to create happy clientele

Service Excellence



We are
committed to
making your
experience with
us a positive
One!



Thank You



Address

4841/G/32, Chakrapani Nagar,
Nagpur 440015



Contact Number

9579048849 | 9665169868



Email Address

info@bkelevator.in
sales@bkelevator.in

